

KNF-200

NET FINDER



Necessity of Purse Seiners!

Introducing new net finder to
check the condition of net subsidence!!



KNF-200 Net Finder

Features

- Compact indicator with reliable operation
- Easily recognized depth indication by wide-angle analog meter and LED
- Bar graph display to show subsidence condition at first sight



- Max. 4 frequencies are available to install.
- Simple brightness adjustment with one touch key
- Easy to see with max. brightness of LED during day time (By far the best recognition during night operation)
- Quick battery charging with one touch key (Display to check battery-charging condition at a glance)
- Selectable receiving unit between bottom-installation type and throwing type
- Reliable & durable transmitting unit
- High performance pressure sensor offers accurate measurement

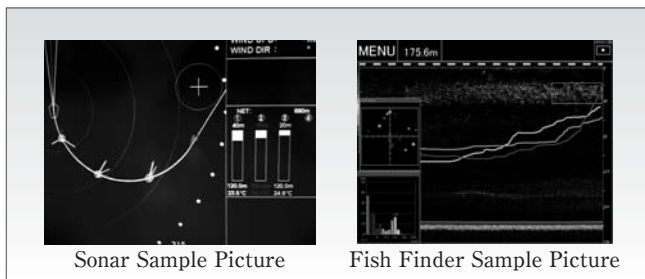


Battery Charger



Transmission Unit

- Connectable to Sonic Sonar : At a glance picture of net subsidence and water temperature.
- Connectable to Sonic Fish Finder : Grasp of conditions by wake mark display of net subsidence



Sonar Sample Picture

Fish Finder Sample Picture

Standard Specifications

I-138 Indicator

Frequency : 35kHz, 45kHz, 55kHz, 65kHz
 Meter Display : Net Depth
 Digital Display (fixed) : Net Depth
 Digital Display (select) : Water temp., Net sinking speed, Remaining batteries

External Output : Sonar (GPIF), Fish Finder (Pulse Output)
 Power Supply : DC24V
 Outer Dia. : 230(width) x 181(height) x 260(depth)mm
 Weight : 5.5 kg

P-94 Battery Charger

Max. Recharge Time : 180 min/unit
 Guide Display : 3 steps
 Electrode : Clip Type
 Others : 3 units combination, Charge in sequence
 Power Supply : AC 100V
 Outer Dia. : 214(width) x 127(height) x 301(depth)mm
 Weight : 7 kg

D-57 Tx Unit

Frequency : 35kHz, 45kHz, 55kHz, 65kHz
 Output : Water Depth 10~360m Accuracy $\pm 1.0\%$
 Water Temp. 0~35°C Accuracy $\pm 0.5^\circ\text{C}$
 Distance to reaching the bottom
 Battery remaining amount output,
 Voltage data

Time to use : 1.5 times operative condition in time compared with x-product.

How to charge : Without removing batteries
 *Necessary to open a gas exhaust valve

Battery : Only for battery to use
 *Not allowed to use a dry battery

Outer dia. : $\varphi 150(\text{Rim}) \times 482(\text{All length})\text{mm}$
 *With a protector

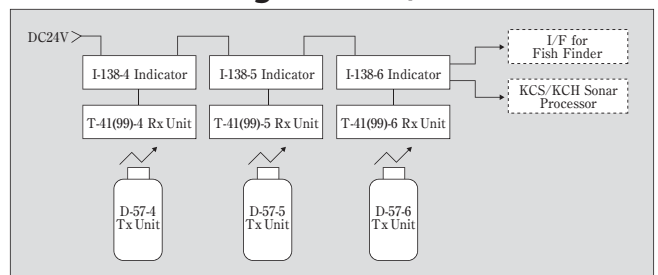
Weight : 15kg

T-41/T-99 Rx Unit

Frequency : 35kHz, 45kHz, 55kHz, 65kHz
 Type : Throwing type (T-41), Fixed type at bottom (T-99)

Outer dia. : T-41 $\varphi 102 \times 135\text{mm}$ With 25m cable.
 T-99 $\varphi 60 \times 90\text{mm}$ With 25m cable.

Connection Diagram (3 frequencies connected)



SAFETY PRECAUTION: Please be sure to read the Instruction Manual before operating.

●Specifications are subject to change without prior notice for development.